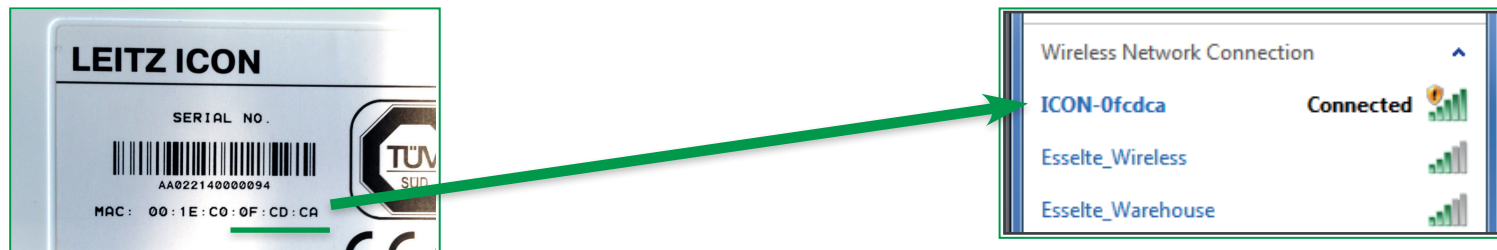


 LEITZ®
ICON
SMART LABELLING SYSTEM

How to Update Firmware

- You will need a Mac or Windows computer with Wi-Fi to update the Leitz Icon firmware.
- You will also need to use a web browser such as Internet Explorer, Firefox, Chrome or Safari (Mac) to update your Leitz Icon printer.
- Prior to updating the printer you must download the update Firmware file (<name>.CIFF) from leitz.com/icon/support.
- It is recommended you save this to your desktop to make it easy to find when it is needed.

- If your Leitz Icon printer is connected to a home or office network, please skip to **Step 3**.
- If your Leitz Icon printer is in Soft-AP (direct) mode, it will be broadcasting a network name in the form of “ICON-xyyzz,” where “xyyzz” represents the last 6 characters of the MAC address located on the bottom of your printer. On some printers, the bottom label will identify this as the “PrinterID”.



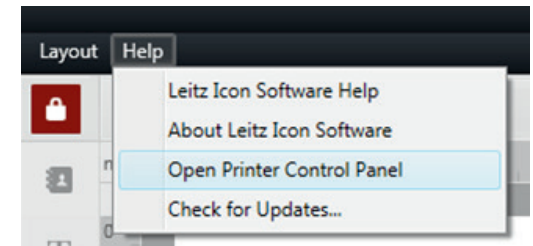
- Just as you would do if connecting to a network in a hotel or café, open up your wireless settings, search for the ICON-xyyxx SSID, and then connect to it.

In case your Leitz Icon is connected to a network:

- If you have the Leitz Icon application installed on your computer, choose the “Open Printer Control Panel” option from the Help menu. Otherwise, open a browser, and type in:

If using Windows: Icon-xxyyzz

If using Mac OS: Icon-xxyyzz.local



- Enter the User Name and Password when prompted.

Default Username: Admin

Default Password: password

(in case you changed the password and you don't remember it, you can reset it as above by making a hard reset (factory reset) of the printer, download the User Manual via www.leitz.com/icon/support to learn how)

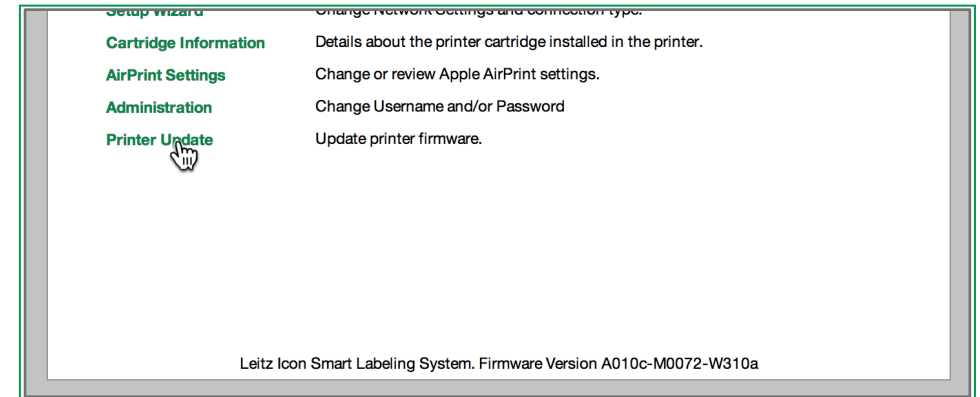
- Make note of the current Firmware version on the bottom of the Control Panel before you update.

Leitz Icon Smart Labeling System. Firmware Version A010c-M0072-W310a

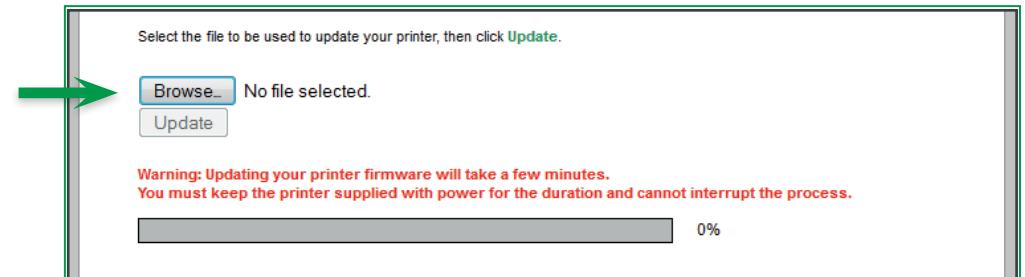
In case your Leitz Icon is in **Soft-AP-mode** (direct, not connected to a network):

- Open your Internet Browser and type in the Leitz Icon IP for Soft-AP:
192.168.1.1
- Enter the User Name and Password when prompted.
Default Username: Admin
Default Password: password
(in case you changed the password and you don't remember it, you can reset it as above by making a hard reset (factory reset) of the printer, download the User Manual via www.leitz.com/icon/support to learn how)
- Make note of the current Firmware version on the bottom of the Control Panel before you update.

- Select “Printer Update” to access the Firmware Uploader.



- Click “Browse” and select the CIFF-file, where stored earlier.



- Click “Update”, and watch the status bar for further instructions.

DO NOT CYCLE POWER OR OTHERWISE WORK WITH THE PRINTER UNTIL YOU HEAR THE PRINTER RESET.

- Wait for the printer to reset. (It will sound like it's advancing the label.)
- Quit and re-open your browser. Verify you can log in by repeating **Step 3**. Instead, you can also re-fresh the browser window.
- After login, make sure your firmware has updated by comparing the version on the bottom of the control panel with the version you started with.

