

The management system of

# Esselte AB

Waterside House, Cowley Business Park, High Street,  
Cowley, Uxbridge, UB8 2HE, UK



has been assessed and its products certified as meeting the requirements of

## Chain-of-Custody

The company was assessed against the following standards:  
FSC-STD-40-004 V2-1 Standard for COC Certification – October 2011  
FSC-STD-40-005 V2-1 Standard for Company Evaluation of FSC Controlled Wood – April 2007  
FSC-STD-40-003 V1-0 Standard for Multi-site Certification of Chain of Custody Operations – June 2007

for the products detailed in the scope below

This certificate is valid from 12 October 2012 until 23 June 2016  
Issue 4. Certified since June 2011  
SGS Ref # GB11/83343

This is multi site scheme

Additional site details are listed on the subsequent page

Authorised by

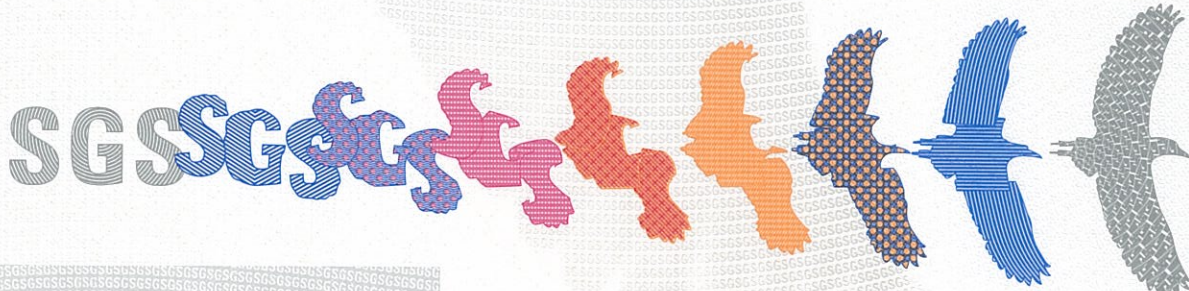
SGS Société Générale de Surveillance SA Systems & Services Certification  
Technoparkstrasse 1 8005 Zurich Switzerland  
t +41 (0)44 445-16-80 f +41 (0)44 445-16-88 www.sgs.com



The mark of responsible forestry

Accredited FSC-ACC-037

The validity of this certificate shall be verified on <http://info.fsc.org/>  
For the full list of product groups covered by the certificate see <http://info.fsc.org/>  
This certificate itself does not constitute evidence that a particular product supplied by the certificate holder is FSC-certified (or FSC Controlled Wood).  
Products offered, shipped or sold by the certificate holder can only be considered covered by the scope of this certificate when the required FSC claim is clearly stated on invoices and shipping documents  
This certificate remains the property of SGS and shall be returned upon request.



This document is issued by the Company subject to its General Conditions of Certification Services accessible at [www.sgs.com/terms\\_and\\_conditions.htm](http://www.sgs.com/terms_and_conditions.htm). Attention is drawn to the limitations of liability, indemnification and jurisdictional issues established therein. The authenticity of this document may be verified at <http://www.sgs.com/en/Our-Company/Certified-Client-Directories/Certified-Client-Directories.aspx>. Any unauthorized alteration, forgery or falsification of the content or appearance of this document is unlawful and offenders may be prosecuted to the fullest extent of the law.

# Esselte AB

## Chain-of-Custody



Issue 4

Detailed scope

The purchase of FSC Mix, FSC Recycled and FSC controlled paper, paperboard and solid wood for the conversion to, and sale of office products (Transfer System & Percentage System) and the outsourcing of print services.

Additional facilities

**Esselte Kozenice, ul. Prezemyslowa 11A, 26-900 Kozenice, Poland**

**Esselte Barcelona, Via Augusta 20-26, E-08006 Barcelona, Spain**

**Esselte Sint Niklaas, Industriepark, Noord 30, 9100 Sint-Niklaas, Belgium**

**Esselte Gorgonzola, Via Milano 35, 20064 Gorgonzola, Italy**

**Esselte Heilbronn, Zentrallager Heilbronn, Wannackerstrasse 70,  
D-74078 Heilbronn, Germany**

**Esselte Stuttgart, Siemenstrasse 64, D-70469 Stuttgart, Germany**

**Esselte Uelzen, Geschaeftsbereich Individual, Im Neuen Felde 60,  
D-29525 Uelzen, Germany**

**Esselte Lanov, Vyrobní Zavod Lanov 249,  
CZ-543 41 Lanov u Vrchlabi, Czech Republic**

**Esselte Istanbul, Ayazag Ticaret Merkezi Kat, 2 Masalak, 34398 Istanbul, Turkey**

**Esselte Bucharest, 121 C Gheorge Titeica Street, Floor Mezzanine, Sectorul 2,  
020295 Bucharest, Romania**

**Esselte Oslo, Alf Bjerckes Vei 22 A, Postboks 62-Okern, N-0508 Oslo, Norway**

**Esselte Stockholm, Sundbybergsvagen 1, Box 1377, S-17127, Solna, Sweden**

**Esselte Copenhagen, Smedeholm 10, DK-2730 Herlev, Denmark**

**Esselte Helsinki, Klavinpellontie 1-3, 02180 Espoo, Finland**

**Esselte Paris, 6 Rue Casteres, F-92110 Clichy, France**

**Esselte Warsaw, ul. Postepu 18 A, 02-676 Warsaw, Poland**



The mark of responsible forestry

Accredited  
FSC-ACC-037

# Esselte AB

## Chain-of-Custody

Issue 4



Additional facilities

Esselte Budapest, 1133 Budapest, Vaci ut 76, Capital Square Irodahazi,  
V torony 1 em, Hungary

Esselte Leobersdorf, Aredstrasse 22, 2544 Leobersdorf, Austria

Esselte Allschwil, 96 Binningstrasse, 4123 Allschwil, Switzerland

Esselte Woerden, Vizemolenlaan 6, 3447 GX / P.O. Box 2183440,  
AE Woerden, The Netherlands

Esselte Prague, V Luzich 818, Praha 4, 14200, Czech Republic

Esselte Ukraine, Vasytkovska 14, Office 308A, 03040 Kiev, Ukraine

Esselte Lisbon, Estrada de Paco de Arcos No. 9, Edificio Espaco, Pisa 1,  
Sala B, 2780-686 Paco de Arcos, Portugal



The mark of responsible forestry

Accredited  
FSC-ACC-037